



Hinckley & Bosworth
Borough Council



FORWARD TIMETABLE OF CONSULTATION AND DECISION MAKING

Scrutiny Commission

13 September 2018

WARDS AFFECTED: ALL WARDS in Hinckley and Bosworth Borough

BLABY AND HINCKLEY AND BOSWORTH COMMUNITY SAFETY PARTNERSHIP UPDATE (HINCKLEY AND BOSWORTH AREA)

Report of: Director (Community Services)

1. PURPOSE OF REPORT

- 1.1 To update Scrutiny on the current focus, successes, performance and challenges for Hinckley and Bosworth borough in relation to the Blaby and Hinckley and Bosworth Community Safety Partnership.

2. RECOMMENDATIONS

- 2.1 That Scrutiny notes the content of this report.
- 2.2 That the joint partnership continues to provide the Scrutiny Commission with six monthly Community Safety Partnership performance update reports.
- 2.3 That scrutiny notes the successes and challenges for the Community Safety Partnership along with the key proactive initiatives and campaigns that have been undertaken.

3. BACKGROUND TO THE REPORT

- 3.1 The Crime & Disorder Act 1998 provides the framework for the establishment of Community Safety Partnerships (CSP's). Membership must include the "Responsible Authorities" as defined by the Crime and Disorder Act 1998.

The responsible authorities on the local Partnership are Blaby District Council, Hinckley and Bosworth Borough Council, Leicestershire County Council, Police, Fire & Rescue Service, Clinical Commissioning Groups and Probation

3.2 The partnership has a current 3 year Community Safety Strategy 2017-20 which is available for download on the community safety pages at www.hinckley-bosworth.gov.uk or www.blaby.gov.uk and is attached at Appendix 1.

The priorities in the strategy have been developed using information and data about crime and disorder issues across the district and borough and take into account the issues local people consider to be of most concern.

- 3.3 Action plans have been developed for 2018-19 to ensure delivery of the Community Safety Strategy and are attached at Appendix 2.
- 3.4 External funding to assist in the work of the partnership primarily comes via the Police and Crime Commissioner's Partnership Locality Fund. The Partnership Locality Fund (PLF) is bid for each year. This enables the partnership to commission and recommission services that enable it to achieve the actions that meet objectives set in the Community Safety Strategy and in the local Police and Crime Plan.
- 3.4.1 The current funding awarded for 2018-19 to the Partnership for Hinckley and Bosworth is £49,573.

4.0 THE FOCUS OF THE PARTNERSHIP

- 4.1 The Community Safety Partnership continues to deliver a wealth of work around three key areas of focus:

Protecting and Supporting People

Reducing Offending and Re-offending

Improving Community Confidence and Cohesion

- 4.2 Section 5 highlights some of the excellent work that has taken place in the last 6 months under these three themes.

5.0 SUCCESSES

5.1 Protecting and supporting people

The partnership has continued to work to support victims of domestic abuse. The outreach service has provided **emotional and practical support for 44 victims of domestic abuse in the last 6 months** and has dealt with not only the immediate safety concerns but has also worked with victims via two ten week group programmes which enable survivors to move on from their experiences.

The partnership has also continued its work with secondary victims of domestic abuse and the children's service, now in its fourth year in Hinckley, has **worked therapeutically with 36 children and young people who have been affected by domestic abuse** to improve their health and well being and help stem the cycle of abuse.

Early intervention work has continued to be a key part of the Partnership's role ensuring that wherever possible vulnerabilities of individuals are identified and addressed early before escalation occurs. Work with vulnerable victims, witnesses and perpetrators has taken place on a daily basis, appropriate referrals made and close work with partner agencies has helped to ensure appropriate support is in place.

The partnership delivers a home security scheme for vulnerable people. This scheme fits locks, bolts, window alarms etc. in homes of people who may have certain

vulnerabilities or who may be living in fear of crime. In the last 6 months we have **fitted home security in the homes of 30 vulnerable people.**

The Partnership has continued its work around some of the emerging crimes that target the vulnerable such as Modern Day Slavery, Child Sexual Exploitation (CSE) and Cyber Crime. It has been actively involved in the Leicester, Leicestershire and Rutland (LLR) wide Modern Slavery Action Group and the Cyber Crime Control Panel. Work is ongoing to create LLR wide awareness materials for both CSE and Modern Day Slavery which will be launched in the autumn. In the last quarter we have **provided training for staff, members and partners on Cyber Crime and Modern Day Slavery.**

The partnership has delivered prevention work to young people so that they can help protect themselves from harm and are better able to make informed choices. Awareness around topics such as drugs and alcohol, anti-social behaviour, new psychoactive substances (so called “legal highs”), cyber safety, personal safety and healthy relationships have been delivered. In the last 6 months **awareness work has taken place with 1384 young people** in schools, with young carers and with children who have been excluded from school.

The ‘Safe Place Scheme’ offers a safe refuge for anyone who is upset, scared or distressed whilst out shopping in busy shopping areas. Hinckley Town Centre **Safe Places have recently been fully audited, reviewed and received updated training** where required. We have also acquired **3 new safe places in the town centre** (Leisure Centre, Wilkinsons and Hinckley Mobility Centre) and have re publicised them via the Business Improvement District (BID), social media and other key networks. Plans are underway for early 2019 to expand this scheme into other areas of the borough. More information on Safe Places and a list of all Hinckley venues can be found at https://www.hinckley-bosworth.gov.uk/info/100003/anti-social_behaviour_and_crime/1262/keep_safe_places_scheme

The partnership is working with the voluntary sector and key Neighbourhood Watch (NHW) coordinators in the area to **support and re- develop NHW within Hinckley and Bosworth.** The working group is currently looking at mapping out what we would want the scheme to look like locally, it is clear that this may move away from, or build on some of the more traditional methods of the scheme.

A campaign enabling people who might feel uneasy on a date in pubs and clubs to discreetly approach staff and request assistance has been rolled out across the borough. Available at participating venues throughout Hinckley & Bosworth the ‘Ask for Angela’ initiative aims to provide customers with a way to remove them from an uncomfortable situation while on a date. The “ask for Angela” phrase can be used to gain assistance from staff members in order to be separated from the company of someone with whom they feel uncomfortable or unsafe due to that person’s actions, words or behaviour. By “asking for Angela”, an individual is alerting staff that they require help. More information and details on venues taking part in the scheme so far can be found on www.leicestershire.gov.uk/AskforAngela

The partnership has also done a **significant amount of work over the last 6 months raising awareness, particularly on social media and with key community groups, of specific scams- for example courier fraud and gift card fraud. Hinckley and Bosworth borough council have been accepted as a Friends against Scams organisation.** Friends against scams is a national trading standards initiative which aims to get out messages about how to spot scams to members of the community. We now have two scam champions, have raised

awareness with Parishes and community groups and training for staff and members is currently being organised for autumn. More information about the scheme can be found at <https://www.friendsagainstscams.org.uk/>

5.2 Reducing Offending and Re-offending

Partnership work to tackle issues of anti-social behaviour has seen a significant **decrease in anti-social behaviour in Hinckley Town Centre**. The work has involved working with young people via the tiered approach with 20 young people on anti-social behaviour contracts, 2 criminal prosecutions and 1 conditional caution. Work to engage and divert the young people has been ongoing with support from youth offending services and Streetvibe young people's services.

A number of campaigns and awareness events have been delivered to help stem potential increases in crime, increase reporting and to provide people with crime prevention advice including:

- **World Cup Campaign**; this included work to prevent and reduce street football anti-social behaviour in a town centre hot spot as well as to raise awareness of responsible drinking and support for victims of domestic abuse. Operational needs were reviewed regularly after each game. Results were positive with incidents being kept to a minimum.
- **Summer Campaign**; personal safety work with young people in schools, diversionary activities provided 3 times a week over summer holidays, summer safety letters handed out by schools from Endeavour Team and general summer safety messages via social media. Youth ASB reports have remained low over the summer months.

The Partnership has teamed up with Leicester City Football Club to bring a Premier Kicks and Community Champions programme to Hinckley and Bosworth. This is a highly successful diversionary scheme which, through football, education and other measures, seeks to engage with young people, divert them from ASB/crime and to raise aspirations. The programme starts in September at Hinckley Academy on a weekly basis for a 12 month period. This is the first programme in LLR outside of the city. Young people from across the whole borough will be able to attend.

Rural Watch, Heritage Watch and Horse Watch have all been established across the partnership area and work is continuing to encourage membership of these schemes and work closely with our rural communities.

There has been a significant amount of partnership work in terms of proactive crime prevention messages and campaigns in regards to burglary and vehicle crime. Neighbourhood watch, recently Neighbourhood link and local messaging groups (Rural Watch and a Neighbourhood Watch App) assist us in sharing information and prevention messages. **In the first quarter of this financial year there have been significant decreases in burglary and theft from vehicle** compared to the same period last year, as detailed in section 6.5.

A decrease in robbery offences in the first quarter of this year compared to the previous year, as detailed in section 6.5.

A significant decrease in deliberate fire setting, as detailed in section 6.6 of this report.

5.3 Improving Community Confidence and Cohesion

Since mid 2017 Police have seen **improvements in the 101 call handling service**. Abandonment rates (where a caller hangs up before speaking to an operator) had dropped from 23% mid 2017 to 3.2% in January 2018. This performance has not been quite as good in the past few months due mainly to the increase in demand on the 999 service. In June and July 2018 on some occasions demand to the 999 number was higher than it is on News Years Eve. Naturally priority is given to answering these calls. This has seen the abandonment rate on 101 increase although, in general, not to the extent of 2017 figures. Year to date shows the abandonment rate on 101 at 10%.

Leicestershire Police are currently in the process of updating and upgrading their on line service offer. This will ensure that it is easier to find information regarding issues on line, report crime on line, track your crime and contact officers dealing with crimes.

The Partnership has continued to increase promotion of its successes and key messages. The Partnership has **produced 2 CSP Newsletters** in the last 6 months which have been sent out via a number of methods such as social media, local partners, voluntary sector and the Business Improvement District (BID). The distribution of the newsletter has now been expanded with hard copies of the latest edition being sent out to GP surgeries, opticians, dentists, secondary schools, colleges, hospital, sure start centres and food banks.

Regular promotion of services available for hate crime and domestic abuse has taken place to encourage people to report and seek help. Plans are currently underway for a hate crime campaign in October and a domestic abuse campaign in November.

The police have introduced a **regular monthly newsletter for Parishes** to keep them informed of local issues.

A Partnership communication plan is currently under development which will detail how we will improve communication and engagement with stakeholders and the public. Part of the plan will include a social media and campaign calendar which details key themes, messages, campaigns that partners will jointly focus on for each month throughout the year.

A local **PREVENT (anti-radicalisation) action plan is in place locally**.

The community houses have continued to work on a **number of projects that bring volunteers together and promote community cohesion**. They have held a Jo Cox 'Great Get Together' event, an event to celebrate 30 years of crime stoppers and have delivered the highly successful community kitchen project. There are now plans to expand the community kitchen projects to other areas of the borough.

6.0 PERFORMANCE

- 6.1 The partnership works actively in specific locations, targets known offenders, proactively identifies and supports vulnerable people and works with local people to build confidence and satisfaction with the way we deal with crime and anti-social behaviour.

- 6.2 The effectiveness of the CSP is measured against performance indicators around crime and antisocial behaviour figures and against the partnership action plans. Data is both quantitative and qualitative in nature. Performance is also fed back to the Office of the Police and Crime Commissioner (OPCC) for all the projects and initiatives in the action plans that receive funding from the OPCC.
- 6.3 All of the partnership action plans for 2018-19 with quarter 1 updates are detailed at Appendix 2.
- 6.4 All projects commissioned by the Office of Police and Crime Commissioner (OPCC) for 2018-19 are on target. Performance reports are submitted to the OPCC on a 6 monthly basis.
- 6.5 Police Crime and Anti-social Behaviour Statistics

Hinckley and Bosworth Police Performance Update 1 st April- 23 rd July 2018						
	Current position(no of offences)	YTD Diff (numerical)	YTD Diff (%)	H & B Current trend	Trend Over 3 years	LLR Trend Over 3 years
Total Crime	2226	+288	+14.7%	↑	↑	↑
Burglary Residential	116	-48	-29.3%	↓	↓	↑
Burglary Business and	63	-19	-23.2%	↓	↓	↓
Theft from motor vehicle	187	-121	-39.3%	↓	↓	↑
Theft of motor vehicle	83	+38	+84.4%	↑	↑	↑
Violence with injury	180	+4	+2.3%	↑	↑	↑
Domestic abuse with injury *	56	-14	-20%	↓	↑	↑
Robbery	5	-6	-54.6%	↓	↑	↑
Hate Crime*	25	+12	+92%	↑	↑	↑
ASB reported(police data)	385	-24	-5.9%	↓	↓	↓
User satisfaction	74%		+3%	↑	↓	↓

Points of Note:

Crime Data recording changes this year will have impacted upon crime figures recorded by Leicestershire Police. The changes in recording have shown an increase in the number of crimes recorded over the past year that is not on trend with previous increases nor does it resemble national averages. As a result any increases must be treated with a degree of caution.

Domestic abuse with injury - we would not want to see the numbers increasing but equally we want to encourage reporting and more importantly confidence in reporting. As such a rise or a decrease cannot be seen necessarily as success. Rather we seek to measure on satisfaction and on successful prosecutions.

As above Hate crime is another area for which we want to increase reporting so again an increase cannot necessarily be seen negatively. Again we would seek to look at satisfaction and positive outcomes to identify responses.

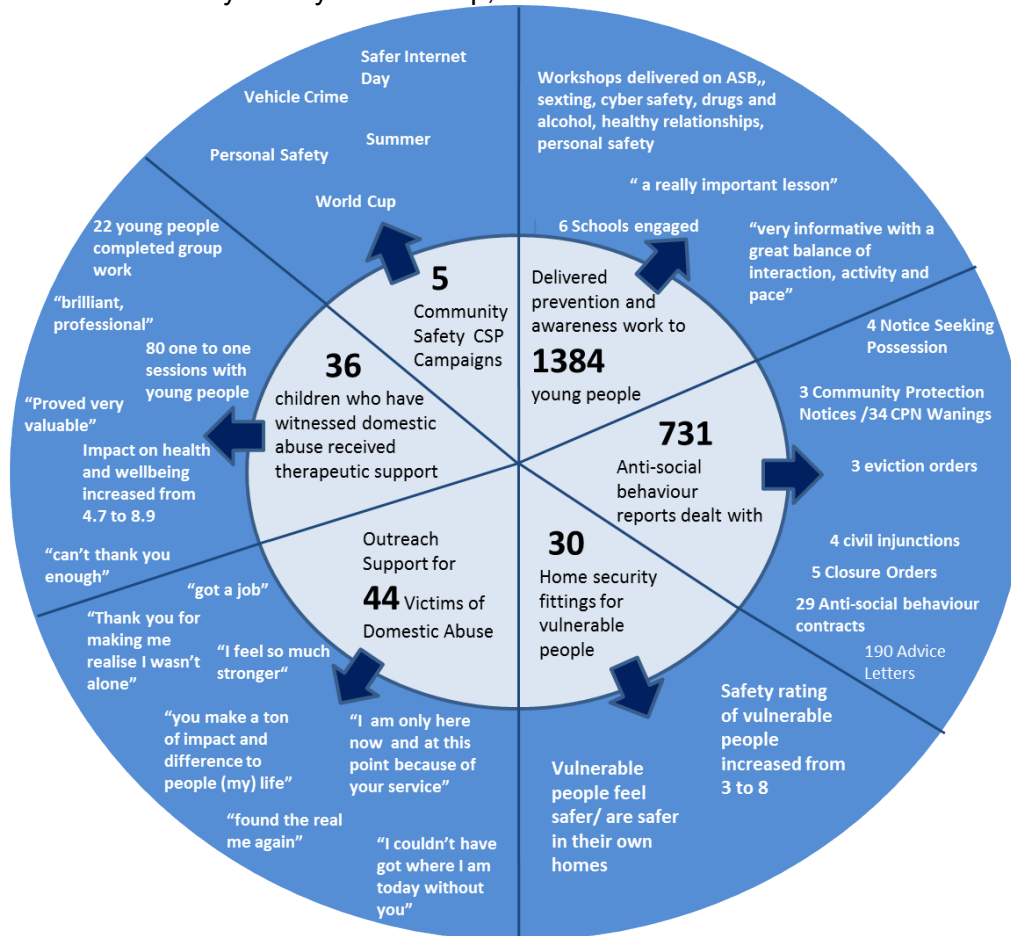
6.6 Leicestershire Fire and Rescue (LFRS) Statistics

LFRS Performance Update					
Hinckley District					
Date Range (1 April 2018 – 30 June 2018)					
Incident Type	Incidents Attended	Year To Date Change from Previous Year		2018/19 Target	Target Index
		Numerical	%	Period/Year	Period %
Primary Fire Total	31	-5 (36)	-14%	0 (31)	0%
Deliberate Primary Fire Total	8	-5 (13)	-38%	-3 (11)	-27%
Secondary Fire Total	21	0 (21)	0%	-1 (22)	-5%
Deliberate Secondary Fires Total	8	-5 (13)	-38%	0 (8)	0%
Road Traffic Collision Total	14	+1 (13)	+8%	+2 (12)	+17%

Points of Note: Quarter 1 statistics show a very positive picture. Although there has been a % increase in road traffic collisions this actually only equates to 1 more incident than in the same period last year and is therefore not statistically significant.

6.7 Outputs and outcomes Community Safety Partnership

Fig 1.2 below shows some key outputs and outcomes from the work of the Community Safety Partnership, statistics relate to Jan-June 2018



7.0 CHALLENGES

7.1 In summary the Partnership faces the following performance challenges:

7.2 Theft of motor vehicle continues to show an upward trend. Keyless entry emerged this year with the codes for cars being 'stolen' in order to subsequently steal cars. Across the neighbourhood policing area (NPA) we have sold significant numbers of 'blocker' pouches to discourage this as a mode of theft. We have also, through campaigns, social media and volunteers, pushed messages regarding removal of keys from the inside of doors etc. The road network makes Hinckley particularly susceptible to cross boarder criminality which can be difficult to plan for or to predict.

7.3 Whilst knife crime is not prevalent in our area it is of increasing concern from a force wide and national perspective. As such we have processes in place to ensure that we are aware of persons who habitually carry knives, are versed on trends and groups that cause us harm and prevention and awareness work is planned for this current year.

7.4 Due to recent exceptionally hot weather there has been an increase in small fires, both deliberate and accidental. Distributing prevention and awareness messages has been supported by partners.

- 7.5 A new emerging threat is County Lines. County Lines is a very serious issue where criminal gangs set up a drug dealing operation in a place outside their usual operating area. Gangs will move their drug dealing from big cities to smaller towns in order to make more money. This can have a really big effect on the community who live there and bring with it criminal behaviour. Hinckley Police working in partnership with Hinckley and Bosworth Borough Council and Leicestershire Police Intelligence Services have put in place an operation to target offenders and to safeguard victims in this arena.
- 7.6 The community safety funding landscape has seen significant changes over the last several years. Currently dedicated funding for the work of the Community Safety Partnership comes from the Police and Crime Commissioner in the form of a Partnership Locality Fund.
- 7.7 Our communities and the needs of our communities are constantly changing. There has been a real shift to the complex nature of some of the problems that we have to deal with, in that they more and more often involve mental health and substance misuse issues.
- 7.8 In 2006, there was one police officer for every 430 residents in Leicester, Leicestershire, and Rutland. In August 2018 that ratio is 1 to every 601 residents. Over the timeframe 2006 to 2017, the population had grown by 13% and the police overall budget had been cut by £38m.
- 7.9 Leicestershire Police, like any business or organisation faced with such changes detailed in 7.8, has to adapt and find new ways of doing more with less. On fewer resources, they are faced with a higher demand for work in some high harm areas such as child sexual exploitation and domestic abuse whilst still having to tackle relatively lower level crimes that affect communities such as vehicle crime and acts of vandalism. The below shows a typical day in the life of Leicestershire Police:

A typical day in the life of Leicestershire Police

• Total Crime	212
• Burglary Dwelling	25
• Robbery	3
• ASB incidents	67
• Domestic incidents	49
• Sexual Offences	5
• Arrests	48
• Positive Outcomes	46
• Missing persons	9
• Road Traffic Collisions	22
• Child at Risk Referrals	51
• Adult at Risk Referrals	22
• 999 calls last 12 months	139, 097
• 101 calls last 12 months	507, 440



8. EXEMPTIONS IN ACCORDANCE WITH THE ACCESS TO INFORMATION PROCEDURE RULES

8.1 The report should be considered in open session.

9. FINANCIAL IMPLICATIONS [CS]

9.1 For 2018/19, Hinckley & Bosworth Borough Council has funding awarded totalling £49,573.

10. LEGAL IMPLICATIONS [AR]

10.1 None arising directly from this report.

11. CORPORATE PLAN IMPLICATIONS

11.1 This report relates to all 3 priority ambitions of Hinckley and Bosworth Borough Council's Corporate Plan 2017-21, namely:

- People
- Places
- Prosperity

12. CONSULTATION

12.1 The joint community safety partnership has a joint consultation on community safety concerns that is available for completion all year. Feedback is used to feed concerns into operational work streams.

13. RISK IMPLICATIONS

13.1

Management of significant (Net Red) Risks		
Risk Description	Mitigating actions	Owner
Performance Risks identified as challenges under Section 7 of this report	Performance risks are managed on a regular basis via tactical groups and action plans are in place.	RB/SS

14. KNOWING YOUR COMMUNITY – EQUALITY AND RURAL IMPLICATIONS

14.1 The impact on rural areas of the Borough has been addressed within the Partnership's action plans 2018-19.

14.2 An Equality Impact Assessment has been completed for the current Community Safety Partnership Strategy 2017-20.

15. CORPORATE IMPLICATIONS

15.1 By submitting this report, the report author has taken the following into account:

- Community Safety implications
- Environmental implications
- ICT implications
- Asset Management implications
- Procurement implications
- Human Resources implications

- Planning implications
 - Data Protection implications
 - Voluntary Sector
-

Background papers: Appendix 1- Community Safety Strategy 2017-20
Appendix 2- Community Safety Partnership Action Plans 2018-19

Contact Officer: Sharon Stacey (Hinckley ext 5636)

Executive Member: Councillor Mike Hall